



EASY iPhone Sleeve

A tutorial by Erin Erickson

Materials

- Two pieces of fabric 10.75" x 4"
- Two pieces of fusible interfacing 10.5 "x 3.75"
- One piece of batting 10.5" x 3.75"
- One piece of fabric 2.5" tall by 2" wide for tab

Cut & Sew

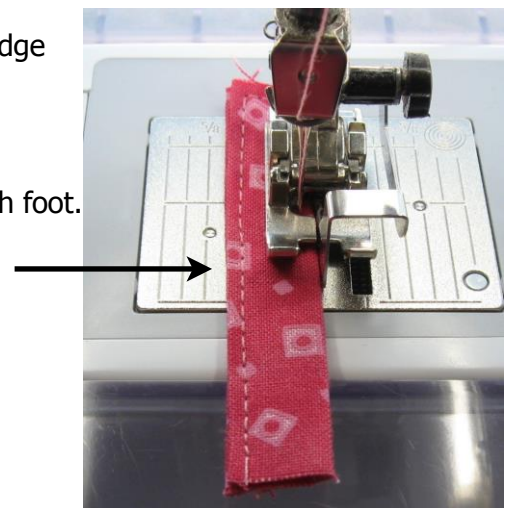
Cut two pieces of fabric lengthwise with the grain **10.75" x 4"**. If you have one, use a rotary cutter and ruler for accuracy. Cutting and sewing straight are the key to this project. Interfacing and batting are cut slightly smaller to reduce bulk in seam allowances.

Fuse interfacing to the wrong side of fabric.



Fold the 2.5" tall by 2" wide tab piece lengthwise in fourths and edge stitch.

I used my edge stitch foot.



Place fabric right sides together, add batting to wrong side and pin in place. Place tab folded in half in the middle of one side as shown.

Sew all around with a **3/8" seam allowance**. This is very important. Measure if you have to! If you use a different seam allowance your sleeve might not be the right size. Leave a 3" gap on one side for turning.

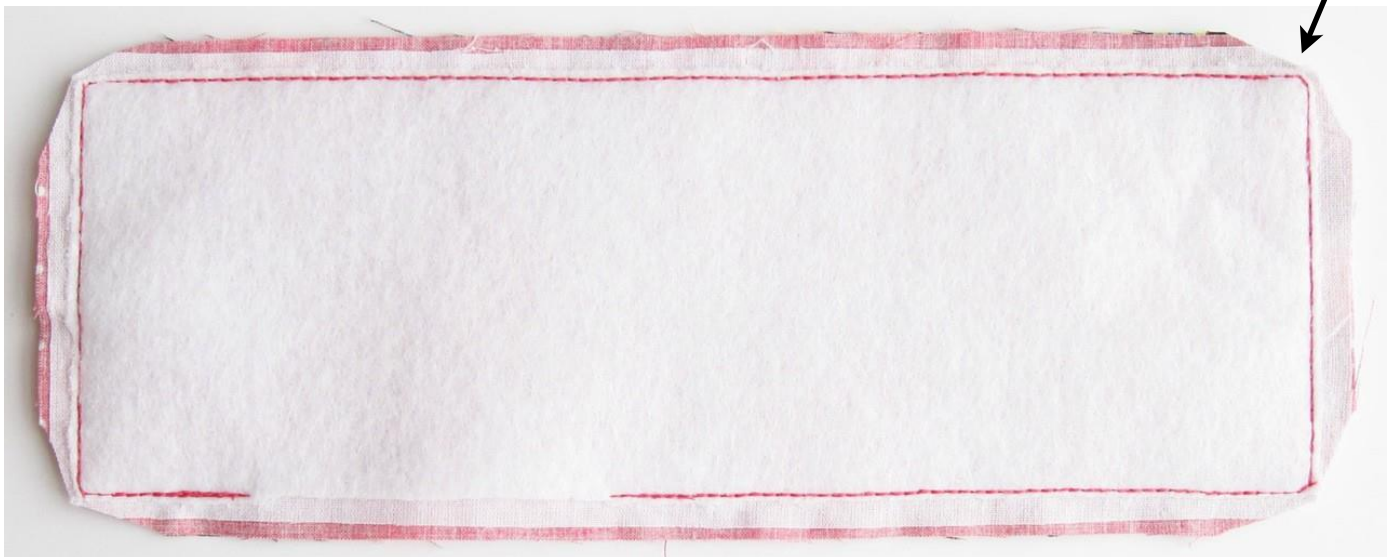


Don't forget the tab! →



TRIM BATTING FROM SEAMS and clip corners.

Clip corners →



Turn right sides out and carefully poke out corners. Press well.
Hand stitch the opening shut. Press again.



Top stitch the top and bottom (optional).



Fold in half with the tab at the back. Stitch as close to the edge as you can while catching all of the layers. Use an edge stitch foot if you have one. Reinforce the top and bottom by backstitching.



Add a split ring or carabiner.

Now you can throw your phone in your purse and not worry about it getting scratched, or attach it to your purse's key clip so you can always find it!

